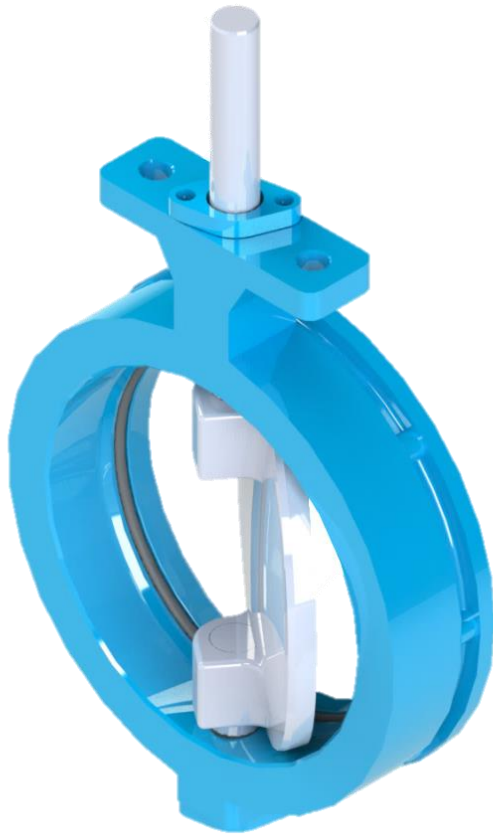


5.10

ISG DISC® butterfly valve, between flanges



Size range/pressure: DN50-500 / PN25

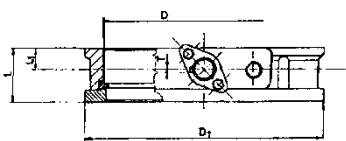
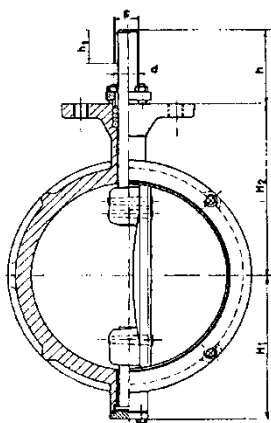
Applications:

The butterfly valve can be applied to open, close and in interim position to regulate the flowing materials in pipeline systems. Main field of application: water treatment, heating and cleaning systems, oil and sewage delivering systems, steam, air, gas depending on the material of the seat.

Operational methods:

- Manual (DN50-150)
- Gear (DN50-500)
- Electro mechanic actuator (DN50-500)
- Pneumatic actuator (DN50-500)
- Shaft extension (DN50-500)

Main materials	
Description	Material
Body	Carbon steel, GS-C25
Disc	Carbon steel, GS-C25 (the closing surface is formed with incorrodible layer)
Seat ring	EPDM (E) Viton (V)
Axis	1.4021
Packing-gland	CHETRATHERM pure graphite sealing rings
Foil bearing	PTFE-filled bronze sieve



DN	D	D1	L	L1	H1	H2	h	h1	d	s	T	kv	Weight (kg)
50	54	105	51	21	73	97,5	80	34	15	16,8	4	220	3,3
65	64	125	51	21	78	102,5		34	15	16,8	4	380	3,8
80	75	140	51	21	83,5	108		34	15	16,8	4	553	4,2
100	93	160	58	22	100	131	110	38	20	22	5	576	6
125	117	190	65	22	113	144		38	20	22	5	1000	8,5
150	142	215	71	25	135	170	140	49	25	27,5	6	1320	14
200	193	270	75	26	158	195		49	25	27,5	6	2680	19
250	240	325	81	28	192	238	165	56	30	33	8	4220	31
300	290	375	87	32	271	280		66	35	38	10	6250	45
350	341	435	94	32	296	305	165	66	35	38	10	8700	56
400	386	485	106	42	322	340		85	45	48,5	14	11400	82
500	486	590	130	54	400	410	99	55	58,5	14	17800	145	

DN	Body	Δp (bar)	Working temperatures (°C)	
			VITON (V)	EPDM (E)
50 - 150	steel	25	(-25) - (+150)	(-20) - (+130)
200	steel	20	(-25) - (+150)	(-20) - (+130)
250 - 300	steel	16	(-25) - (+150)	(-20) - (+130)
350 - 500	steel	10	(-25) - (+150)	(-20) - (+130)

Actuating torques unloaded and max. at load (Nm)

DN	50	65	80	100	125	150	200	250	300	350	400	500
Δp_0	25	30	35	40	50	70	110	170	250	330	420	680
Δp_{max}	40	40	50	60	80	140	180	280	450	500	700	1300